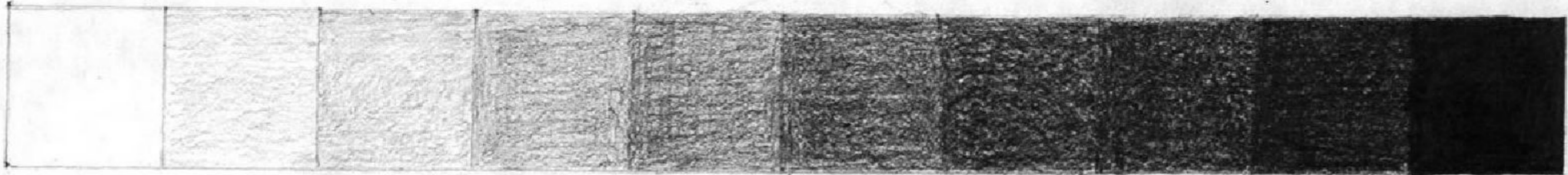
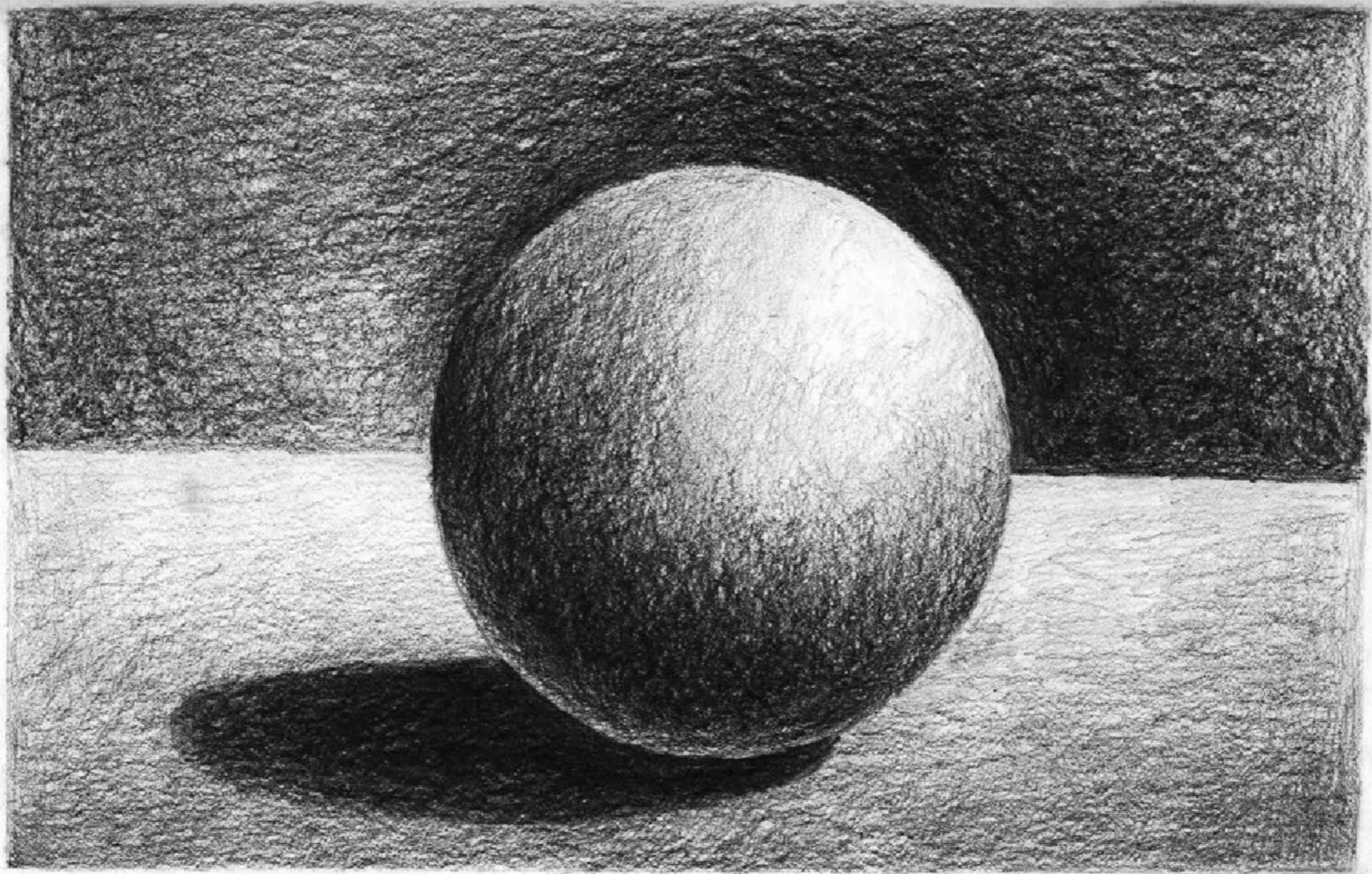


Oct 11, 2016

Jedi Knight Reflection:



Write about a strategy/  
representation that you  
saw that you would like  
to use next time you  
are solving a problem



# Elbow Park School Interpretive Tour

- **FOCUS:** Incorporate student voice in the interpretation panels at the new school. Engage in the authentic process of designing and building a new school that is working towards receiving LEED certification.
- **Guiding Questions:** What is LEED certification? What is needed for LEED certification to occur? We want to guide our visitors and share interpretive signage about our building. What should we share? What do we want our visitors to know?

[http://www.cagbc.org/CAGBC/  
LEED/CAGBC/Programs/LEED/  
Going\\_green\\_with\\_LEE.aspx?  
hkey=54c44792-442b-450a-  
a286-4aa710bf5c64](http://www.cagbc.org/CAGBC/LEED/CAGBC/Programs/LEED/Going_green_with_LEE.aspx?hkey=54c44792-442b-450a-a286-4aa710bf5c64)

Oct 12, 2016



You will need:

- binder
- math journal
- pencil

What might this number represent?

500

Discuss at your table group...  
Practice saying the number out loud...

What might this number represent?

500

Lucas Film set up this number of storm troopers in an array on the Great Wall of China

What might this number represent?

114 500

Discuss at your table group...  
Practice saying the number out loud...



What might this number represent?

114 500

Number of students attending CBE schools

What might this number represent?

36 286 378

What might this number represent?

36 286 378

Population of Canada

In your journal create a place value chart for this number

What is a place value  
chart?

The world's all-time best-selling copyright book is *Guinness World Records*. From October 1955 to June 2002, 94 767 083 copies were sold.

Suppose the number is written in this place-value chart. Where will the digits 9 and 4 appear?



Hundred Millions	Ten Millions	Millions	Hundred Thousands	Ten Thousands	Thousands	Hun

October 13th, 2016



# Elbow Park School Interpretive Tour

## 15 Min: Poster Paper Prep

- Possible ideas for the sign - Research
- Questions/Comments about writing written by Communication Specialists

## 15 Min: Poster Paper Sharing

- Read each poster
- Use post-it's to identify points you think need to be included in writing
- Use post it notes to ask questions

## 20 Min: Poster Paper Prep

- Use feedback to type up ideas and questions
- This could include a “new” and “better” write up

## Consider the following:

- We want to guide our visitors and share interpretive signage about our building.
- What should we share?
- What do we want our visitors to know/think about?



# Feedback

- What does good feedback sound like?  
look like?
- Helpful vs. Superficial Feedback

# Sketching



1. An old pair of shoes